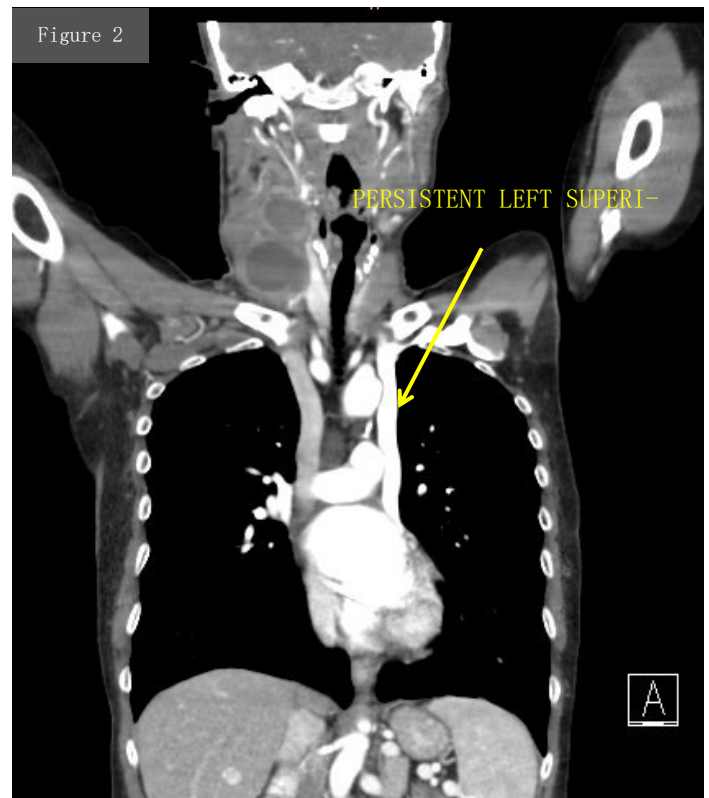
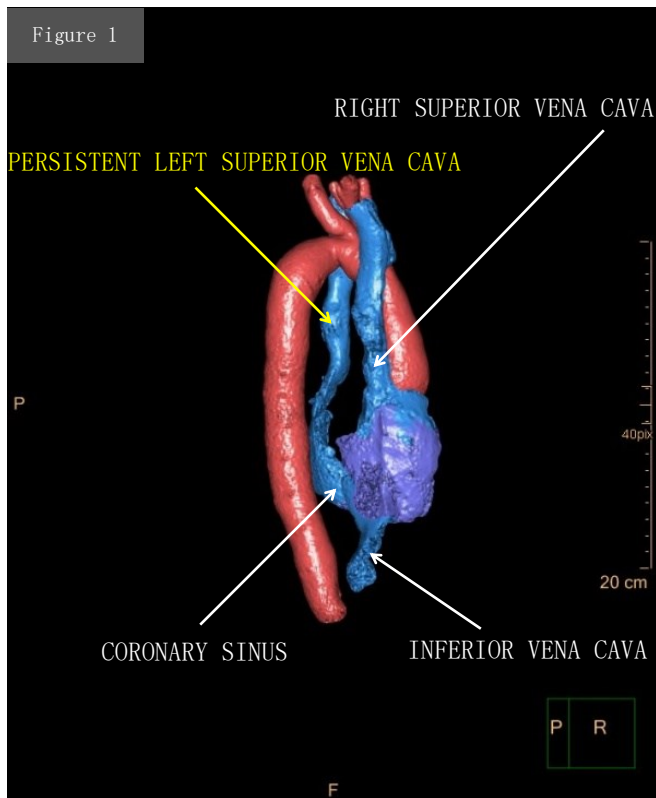


Persistent Left Superior Caval Vein



Author: TARKAN JÄGER, DEPARTMENT OF SURGERY, PARACELUS MEDICAL UNIVERSITY, SALZBURG, AUSTRIA

Patterns of persistent left superior vena cava (PLSVC)

- 92% PLSVC flowing into the coronary sinus (Figure 1 and 2).
- 25% Existence of an „innominate vein” between PLSVC and right superior vena cava.
- 8% PLSVC flowing into the left atrium.
- 0.1% PLSVC with absent right superior vena cava.

FACTS & RELEVANCE

- Prevalence: 0.5% among general population & 4% in patients with congenital cardiac malformations.
- Development of left superior vena cava starts in the seventh week of pregnancy and usually obliterates at birth.
- PLSVC can lead to technical challenges during interventional procedures.

REFERENCES

Biffi, M.; Boriani, G.; Frabetti, L.; et al. Left superior vena cava persistence in patients undergoing pacemaker or cardioverter-defibrillator implantation: a 10-year experience. *Chest*. 2001 Jul;120(1):139-44.